

STANDARD DEPARTURE CHART
INSTRUMENT (SID) - ICAO

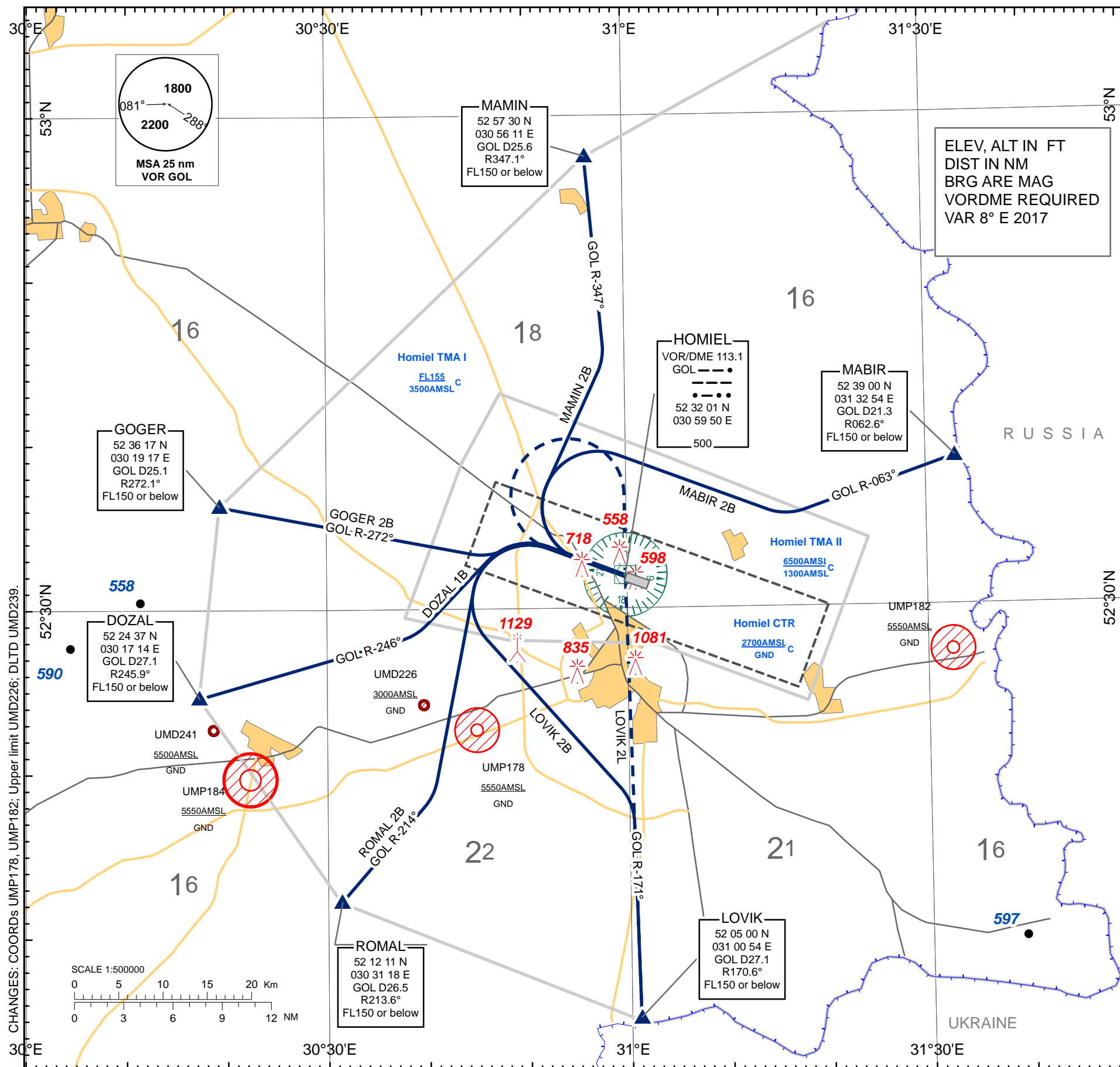
TRANSITION ALTITUDE
6000'

Alt set:- hPa (mm on req)
- QNH (QFE on req)

APP 126.100
TWR 118.100
MET 119.550 (EN)
124.475 (RUS)

HOMIEL
RWY28

GOGER 2B, DOZAL 1B, LOVIK 2B
LOVIK 2L, MABIR 2B, MAMIN 2B
ROMAL 2B



STANDARD INSTRUMENT DEPARTURE (SID) ROUTES HOMIEL RWY 28	
SID NAME	ROUTE
GOGER 2B	GOGER TWO BRAVO Climb straight ahead to 1500 (1032) or above, turn LEFT to intercept GOL VOR R-272° and proceed to GOGER.
DOZAL 1B	DOZAL ONE BRAVO Climb straight ahead to 1500 (1032) or above, turn LEFT 216° track to intercept GOL VOR R-246° and proceed to DOZAL.
LOVIK 2B	LOVIK TWO BRAVO Climb straight ahead to 1500 (1032) or above, turn LEFT 131° track to intercept GOL VOR R-171° and proceed to LOVIK.
LOVIK 2L	LOVIK TWO LIMA Climb straight ahead to 1500 (1032) or above, GOL DME D5 not less, turn RIGHT to GOL VOR (pass GOL VOR at 3000 or above), to intercept GOL VOR R-171° and proceed to LOVIK.
MABIR 2B	MABIR TWO BRAVO Climb straight ahead to 1100 (632) or above, turn RIGHT 103° track to intercept GOL VOR R-063° and proceed to MABIR.
MAMIN 2B	MAMIN TWO BRAVO Climb straight ahead to 1100 (632) or above, turn RIGHT 017° track to intercept GOL VOR R-347° and proceed to MAMIN.
ROMAL 2B	ROMAL TWO BRAVO Climb straight ahead to 1500 (1032) or above, GOL DME D5 not less, turn LEFT 184° track to intercept GOL VOR R-214° and proceed to ROMAL.

CHANGES: COORDs UMP178, UMP182; Upper limit UMD226; DLTD UMD239.

THIS PAGE INTENTIONALLY LEFT BLANK